



Festival of Bands

November 5, 2022
Jupiter Community High School
Director's Packet

Jupiter Community High School is honored to host the 2022 Festival of Bands. Welcome, and thank you for joining us for this year's event.

Contained in this package:

- **Site Maps**
- **Director Information**
- **Link to Registration Info form**
- **Spectator Information**
- **Concessions Information (Pre-orders recommended for performers)**

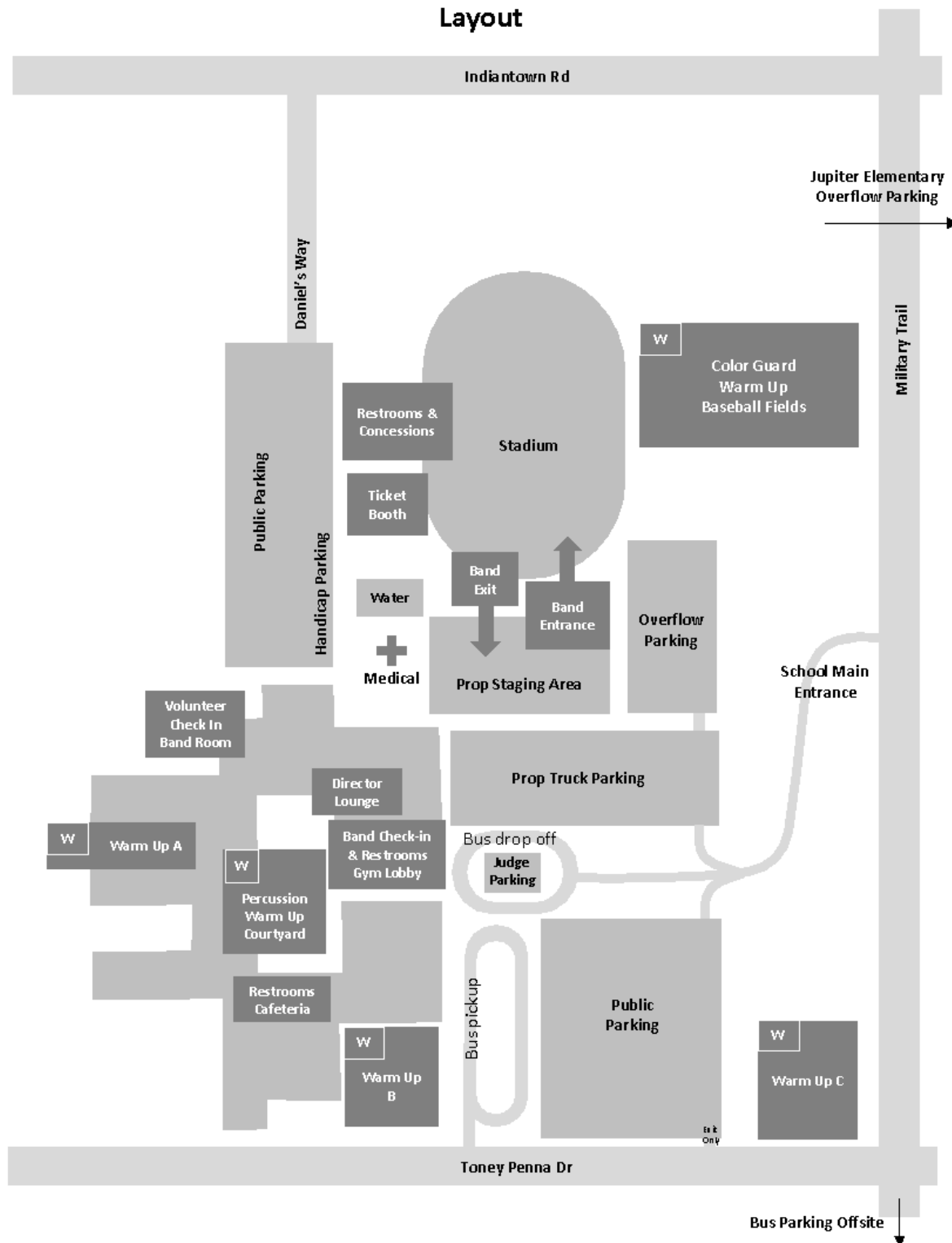
[Jupiter Community High School](#) 500 N Military Trail, Jupiter, FL 33458



Festival of Bands

November 5, 2022
Jupiter Community High School
Director's Packet

Jupiter Community High School Layout





Festival of Bands

November 5, 2022
Jupiter Community High School
Director's Packet

Jupiter Community High School 500 Military Trail, Jupiter FL 33458

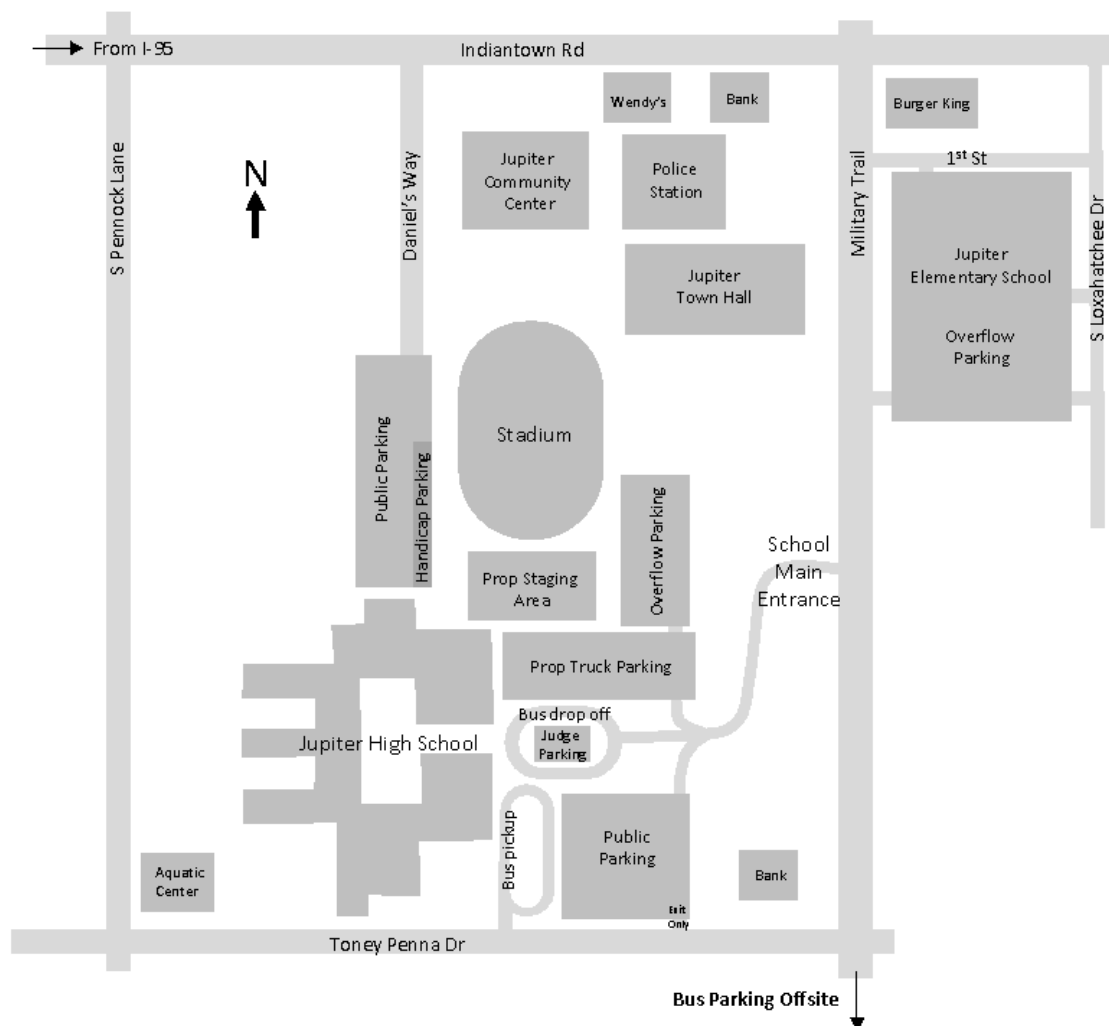
Jupiter High School is located at the corner of Indiantown Rd and Military Trail. There are two parking areas, one off Daniel's Way and one off the School Main Entrance.

Recommended Route

- I-95 North or I-95 South
- Exit 87A – East on Indiantown Rd
- Right turn on Military Trail
- Right turn into School Main Entrance

Buses

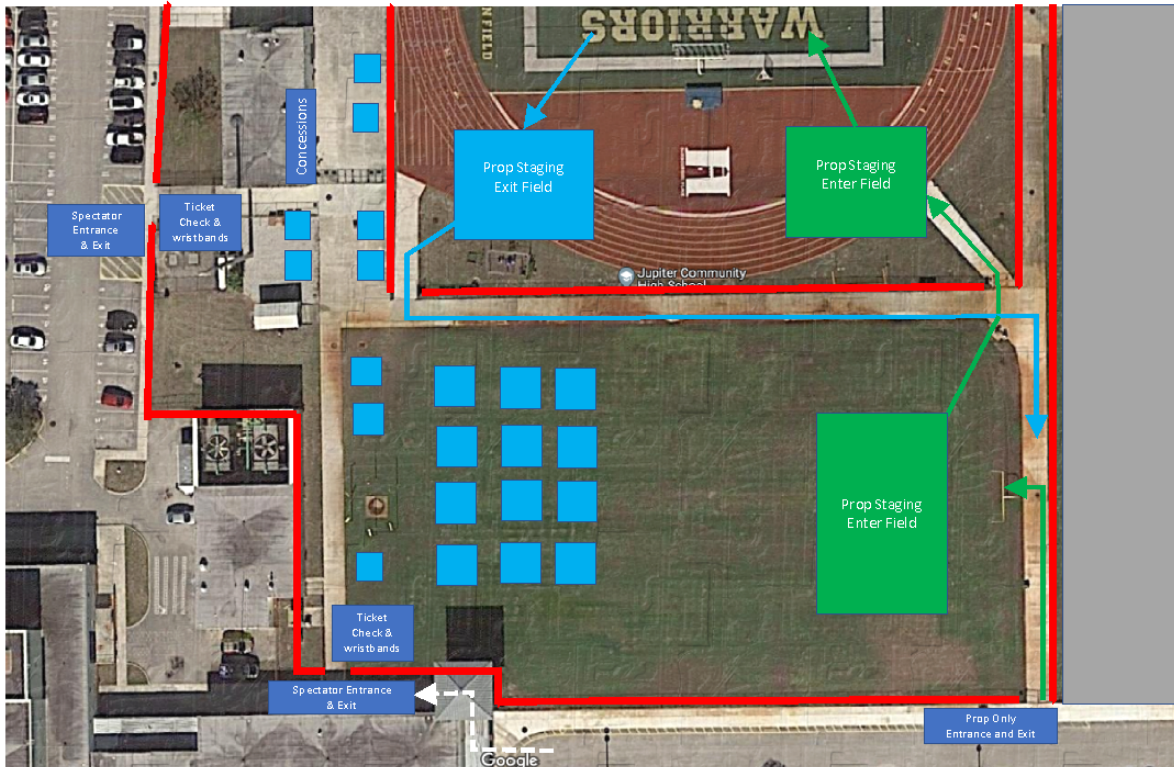
- Drop Off: Main Loop off Military Trail
- Pick Up: Bus Loop off Toney Penna Dr
- Parking: Offsite





Festival of Bands

November 5, 2022
Jupiter Community High School
Director's Packet



Staging Area Map



Festival of Bands

November 5, 2022
Jupiter Community High School
Director's Packet

Director's Information

Drop Off instructions

Your buses will drop off at the main loop accessible from Military Trail, at the front of the school. The check-in table will be just inside the gates. We will direct your buses to an off-site parking facility approximately a mile away. You will not have access to the buses prior to departure.

Equipment Trucks

Parking will be available at the North lot accessible from the main entrance off Military Trail.

Director's Lounge

The Director's lounge is in the 10000 building, just around the corner and to the right of check-in. This room is for Directors and staff only, and will be stocked with food and beverages free of charge. Ask your host for directions to the lounge. We appreciate your efforts and hard work this year!

Wrist Bands

Everyone who enters the gate must have a wrist band. We are providing 1 per 10 students for chaperones, the amount needed for staff, and a wrist band for each director (these names need to be submitted to us in advance). Also, please note that your truck drivers will be given a wrist band as well (this is not part of your 1 per 10 chaperone allotment). Additional wristbands can be preordered on the information sheet for \$15.00 each, payable by cash or check at check-in. Wristbands will be \$18 day of show, ordered through GoFAN.

Electrical Power

There will be a power cord available for you that reaches the 50-yard line/front side line. If you need power to reach any further you are responsible for bringing your own extension cords.

Bus Pick-up Instructions



Festival of Bands

November 5, 2022
Jupiter Community High School
Director's Packet

Please inform your host when your band is assembled and ready to leave campus. We will arrange for the buses to pick up in the south bus loop off Toney Pena Drive.

Band Registration Information

Help us plan for your arrival by filling out the form located here:

https://docs.google.com/forms/d/e/1FAIpQLSdKSoVEE5si6kuq_TBs8pRPwGke6JrBZy36868GDd-lqTH-cQ/viewform?usp=sf_link



Festival of Bands

November 5, 2022
Jupiter Community High School
Director's Packet

Spectator Information

Ticket Sales

Tickets will be \$18 per person, purchased online in advance through GoFAN.co. Ticket sales will begin September 25th. See website for more details.

<https://jupiterbands.com/festival-of-bands/>

General Admission Parking

Spectator parking will be no charge this year. Parking will be at the South parking lot off Military Trail main entrance, or the parking lot off Indiantown Road via Daniel's Way (see maps). Additional overflow parking will be available at Jupiter Elementary School, across Military Trail at 200 S Loxahatchee Dr, Jupiter, FL 33458.

Concessions

We have a concession stand with grilled items, pizza, snacks, and drinks. Feel free to visit at any time during the evening. Please note: Due to anticipated large lines, we highly encourage you to use our **Pre-order form** (link on next page) to secure food for your performers, and pay at Director check-in.

Band O'Grams

Please inform your parents that Band O'Grams will be available for purchase near the gate. Our stadium announcer will announce a Greeting, Personal Message, Thank You, or Shout Out before your band performs. \$3.00 each or 2/\$5.00.

Clear Bag Policy of PBCSD is in effect. Please let your community know that this will be enforced at spectator entry.

This is a CASH ONLY event.



Festival of Bands

November 5, 2022
Jupiter Community High School
Director's Packet

Concessions Information

The Jupiter High School Band parents do an amazing job running concessions for all our football games, and will do the same for this festival. Spectators won't go hungry! To ensure fast turnaround, and limit lines for food, we highly recommend using the **Pre-Order option for your performers, staff, and volunteers**. Submit your pre-order by **TUESDAY, November 1st**, and settle payment via check or cash at director check-in.

Follow this link to submit your Pre-order for food:

https://docs.google.com/spreadsheets/d/1s1NEwqnis_fsJnWGxWMDpMYtVultUuLyMRcH8GzeVAA/edit?usp=sharing

You can either share the google form with ryan.ross@palmbeachschools.org or email directly to him.